

# AGP-7800

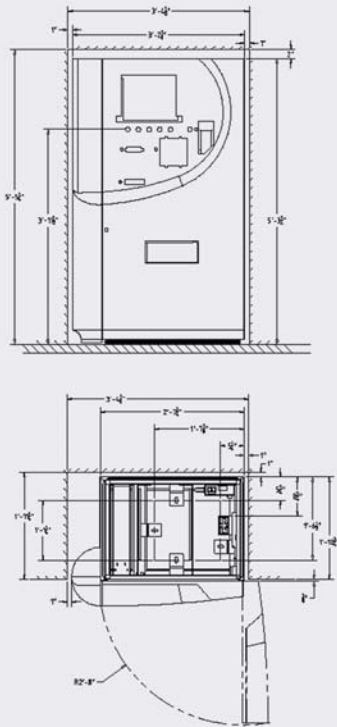
Series

## *Pay-On-Foot Central Pay Station*



*Amano AGP-7800 automatic Central Pay Station (CPS) is designed as a fast pay-processing unit and is perfect for large-scale 24-hour operations. A large easy-to-read 15-inch flat panel color display and lighted guidance system leads users through easy-to-follow transactions enhanced with screen prompts and voice announcements. Transactions are faster and easier for the user—virtually eliminating long lines and delays.*

**Central Pay Station**  
**AGP-7800**



**FEATURES**

- Ergonomic, customer-friendly, compact modular design* ◀
- Large, easy-to-read 15-in. flat panel display* ◀
- Intuitive, easy-to-use lighted guidance system helps patrons make fast transactions* ◀
- Superior detection/rejection technology* ◀
- One-drop change location eliminates confusion* ◀
- Accepts notes and coins. Faster, more reliable electronic self-replenishing coin system eliminates tubes with option for up to three recycling coin hoppers and a fourth non-recycling hopper* ◀
- Dispenses notes (up to 3), coins (up to 4), and receipts* ◀
- Large, 8" receipt roll—saves labor, improves security* ◀
- Ethernet-based peripheral communications sub-system* ◀
- Uninterruptible power supply* ◀
- Note storage in individual, lockable cassettes* ◀
- Scalable hardware/software* ◀
- Multiple languages are programmable, including English, French & Spanish* ◀

**SPECIFICATIONS**

**COMPLIANCE**

**CISP (Cardholder Information Security Program) compliant, validated by VISA.** Meets ADA (Americans with Disabilities Act) and ANSI (American National Standards Institute) requirements.

**ELECTRICAL**

**Power Source:** 120VAC, 50/60HZ  
**Power Consumption:** Average 60W, maximum 1100W

**AMBIENT ENVIRONMENT**

**Temperature:** 14° F to 104° F (-10° C to 40° C)  
**Relative Humidity:** 10% to 90% (non-condensing)  
 Automatic thermostat-controlled heaters and fan included

**HOUSING**

**Height:** 63.1" (1603 mm)  
**Width:** 38.3" (973 mm)  
**Depth:** 27.2" (690 mm)  
**Construction:** Sheet steel housing, fiberglass front cover  
**Cabinet Finish:** Textured powder coat finish (RAL #7032)  
**Door Finish:** Polyurethane paint on fiberglass  
**Total Weight:** Approximately 800 lbs. (363 kg)

**TIME CONTROL**

Quartz oscillated, accurate within ±3 seconds per week at 68° F to 86° F (20° C to 30° C)  
 Perpetual calendar  
 Programmable Daylight Saving Time adjustment

**ON/OFF-LINE OPERATION**

The model AGP-7800 may operate as a stand-alone unit utilizing the reporting functions of the pay station.

**On-Line Operation:** Utilizes RS-485 communication with the parking management software host. Data sent from the pay station to the host PC includes individual transaction data, alarm and event messages. Data sent from the parking management software to pay station includes program data updates, time synchronization, backout ticket data and in/out of service status.

**SECURITY**

**Multi-point safety lock system**

**Access Lock:** Secures the main locking mechanism utilizing a plug type lock to be removed in order to gain access to the inner lock.  
**Inner Lock:** Secures the pay station door utilizing a T-shaped key  
**Intruder alarm**  
**Security locks on money handling compartments**

**UNINTERRUPTIBLE POWER SUPPLY (UPS)**

Protects the pay station from poor quality AC line power. Protection is provided from surges, low voltage, high voltage and complete power failure. On power fail, UPS will initiate an emergency shutdown. If transaction is in progress, the transaction will be completed prior to shutting down, the display will go blank and the internal PC will power down. UPS also provides protection of software databases.

*Manufactured by Amano Cincinnati, Inc.'s Ohio factory, an ISO 9001:2000 registered facility. Specifications are approximate and are subject to change without notice. UL approval does not apply to 220/240V AC, 50/60 Hz*



REPRESENTED BY:



140 Harrison Avenue, Roseland, NJ 07068-1239  
**(800) 526-2559** [www.amano.com](http://www.amano.com)