

AGP-1700

Series

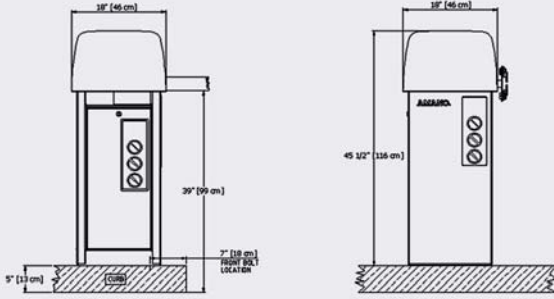
***Parking Gate—
Lighted or
Non-Lighted***



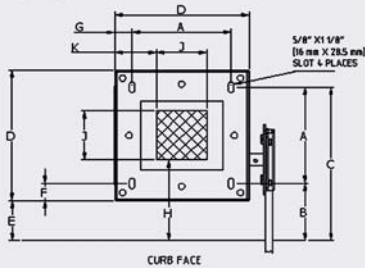
Amano Cincinnati's AGP-1700 Series Revenue Parking Gate is designed to meet all your parking control needs. The microprocessor-based logic and functionality provides the ultimate in reliability, performance, and safety, as well as the flexibility to accommodate four different modes of operation.

Parking Gate

AGP-1700



BOLT LAYOUT



CONFINE RIGID CONDUIT NO MORE THAN 2" (5 cm) HIGH IN THIS AREA

A=11 3/4" (30 cm)	F=2 1/8" (5.5 cm)
B=7" (18 cm)	G=2 1/8" (5.5 cm)
C=18 3/4" (48 cm)	H=9 7/8" (25 cm)
D=16" (41 cm)	J=6" (15 cm)
E=4 7/8" (12.5 cm)	K=5" (13 cm)

FEATURES

- Large, cabinet-style design
- Four selectable modes of operation
- Direct replacement footprint for other brand gates
- Pre-installed detector harness
- Access door can be located on any side of pedestal
- Microprocessor-based logic and functionality
- Standard "extra sensory" safety feature
- Instant reversing motor
- Heavy-duty polyethylene cover will not crack or peel
- 1/3 horsepower motor with sealed gear reducer
- Internal thermal/overload protection
- Thermostat-controlled heater
- 12' standard or lighted gate arm, and 11' standard folding gate arm configurations available
- Lighted Gate Option (110V Version Only)
- Provides exceptional visibility between dusk and dawn (gate arm lights flash when in motion)
- Increases pedestrian/motorist safety
- May be retrofitted to existing AGP-1700 gates
- Both gate arm and hood may be lighted (hood may accommodate custom user logo)

SPECIFICATIONS:

ELECTRICAL

120V AC, 60 Hz

220/240V AC, 50/60 Hz (Non-lighted version only)

Service amps: 19.6A (120V) Lighted gate: 20A (100V 120V) 10A (240V)

Connections:

- Four utility power outlets
- DIN rail terminal blocks including logic
- Main power breakers

Field wiring:

- Removable terminal block assembly
- Dry contact input, output
- 12V DC unregulated

MOTOR CHARACTERISTICS

Horsepower: 1/3 single-phase instantly reversing motor

Speed: 1625 RPM

Starting amps: 10A (120V) maximum

Running amps: 4.5A (120V)

Heavy-duty V-belt to drive speed reducer.
Internal thermal/overload protection

ENVIRONMENT

Temperature: -15°F ~130°F (-26°C ~ 54°C). Automatic thermostat-controlled heater included

Humidity: 10% ~ 90% (non-condensing)

CABINET

Heavy-duty, 14-gauge all-weather steel construction with high-density polyethylene cover. Direct replacement footprint for other brand gates

Dimensions: 45-1/2"H x 18"W x 18"D (116 cm x 46 cm x 46 cm)

Weight: 166 lbs. (75 kg)

Access: Removable cover on drive mechanism (360° access)
Removable door (access to electrical connections and control box)

Finish (Std): Yellow (RAL #1028); White (RAL#9010); custom color available

GATE ARM

Height: 34" (86 cm) in DOWN position

Length: AL12: 12' (365 cm)— aluminum
AL20: 11' (323 cm) folding gate arm — aluminum
A10: 10' (304 cm)— wood

Illumination kit: Available for AL12 gate arm (AGP-0515/A623)

Optional sonic alert: Audible alarm kit (AGP-0517/A627)

MICROPROCESSOR-BASED CONTROLLER

Quick, plug-in installation. Gate up/normal/down switch (internal manual override)

Operation modes: One way pay
Bi-directional lane
Free direction
Input/output lane controller

Switch selectable features: "Extra sensory" timer
Backout timer
Closing loop safety "auto stop"

Built-in detector harness will accept single channel (AGP-0134) or dual channel (AGP-0234) vehicle detectors

Manufactured by Amano Cincinnati, Inc.'s Ohio factory, an ISO 9001:2000 registered facility. Specifications are approximate and are subject to change without notice. UL approval does not apply to 220/240V AC, 50/60 Hz



REPRESENTED BY:

AMANO®

140 Harrison Avenue, Roseland, NJ 07068-1239
(800) 526-2559 www.amano.com