

AGP-1000

Series

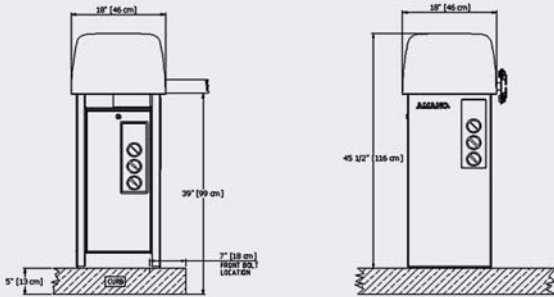
Access Control Gate



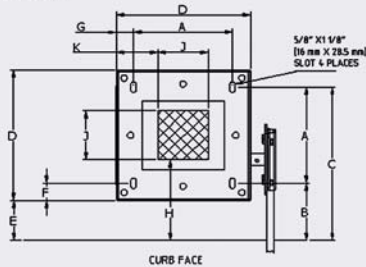
The Amano AGP-1000 Series Gate incorporates a new philosophy in drive technology. The DC direct drive gear-motor addresses the requirements of both the residential and commercial Access Control markets. Designed for easy installation and simple parallel communications with other access control equipment, the AGP-1000 Series is the perfect choice for simple entry and/or exit access control applications where durability and dependability count.

Access Control Gate

AGP-1000



BOLT LAYOUT



☒ CONFINE RIGID CONDUIT NO MORE THAN 2" (5 cm) HIGH IN THIS AREA

A=11 3/4" (30 cm)	F=2 1/8" (5.5 cm)
B=7" (18 cm)	G=2 1/8" (5.5 cm)
C=18 3/4" (48 cm)	H=9 7/8" (25 cm)
D=16" (41 cm)	J=6" (15 cm)
E=4 7/8" (12.5 cm)	K=5" (13 cm)

FEATURES

- Utilizes Gentle Touch™ safety protection system ◀
- Large, cabinet-style design ◀
- DC direct drive gear-motor ◀
- Selectable "Auto-Up" under power failure ◀
- Plug-in vehicle detector ◀
- 12' left hand, 12' right hand, and 16' left hand models available ◀
- Swing, sliding or tandem gated lane configurations ◀
- Variable speed control provides smooth operation ◀

REPRESENTED BY:

SPECIFICATIONS

ELECTRICAL

Service amps:	120 VAC, 60 Hz, 20 AMPS
Connections:	One utility power outlet, main power field box, main power switch with built-in circuit breaker
Field Wiring:	Removable terminal block assembly 24V DC unregulated

MOTOR CHARACTERISTICS

High Torque Motor:	1/3 hp
Speed:	3600 rpm 24V DC
Starting amps:	12A (24V)
Running amps:	3.5A (24V)
Brush Life:	1-million gate cycles

GEARBOX CHARACTERISTICS

Gear Ratio:	261:1
Torque Rating:	1,000 in-lbs.

BRAKE ON MOTOR CHARACTERISTICS

Voltage:	Operating range—10V to 24V
Holding Force:	2,000 in-lbs.

GATE ARM CHARACTERISTICS

Height:	34" (86 cm) in down position
Length:	AL20: 11', (323 cm)—folding gate arm—aluminum AL12: 12', (365 cm)—aluminum AL16: 16', (488 cm)—aluminum

ENVIRONMENT

Temperature:	-15°F ~ 130°F (-26°C ~ 54°C)
Humidity:	10% to 90% humidity (non-condensing)

CABINET

Heavy-duty, 14-gauge all weather steel construction with high-density polyethylene cover (aluminum cover optional). Direct replacement footprint for other brand gates.

Dimensions:	45-1/2" H x 18" W x 18" D (116 cm x 46 cm x 46 cm)
Weight:	166 lbs. (75 kg.)
Access:	Removable cover on drive mechanism (360° access) Removable door (access to electrical connections and control box)
Finish (Std):	White (RAL #9010)
Heating:	Optional heater available

MICROPROCESSOR-BASED CONTROLLER

Gate up/normal/down switch (internal manual override)	
Operational Modes:	Free Way, One Way, Two Way, Slave, One Way with Auxiliary Gate, Two Way with Auxiliary Gate, Free Way with Auxiliary Gate.
Switch Selectable Features:	"Extra sensory" timer: Closing loop safety "auto stop", backout timer
Built-in detector socket will accept single channel (AGP-0139) or dual channel (AGP-0239) vehicle detectors.	
Dual channel detector comes standard with the gate. A single channel detector may be purchased separately.	

Manufactured by Amano Cincinnati, Inc.'s Ohio factory, an ISO 9001:2000 registered facility. Specifications are approximate and are subject to change without notice.



AMANO®

140 Harrison Avenue, Roseland, NJ 07068-1239
(800) 526-2559 www.amano.com